

The Return Of BATTLE OF THE SEXES

Life, Health and Love, By the Numbers

Most likely to initiate an in-bed early morning kiss?

27% vs 23%

Women ♀



Most likely to grab their sweetie before reaching for their toothbrush?

13% vs 13%

♀ Tied ♂



25%

pucker up and kiss their partner before rolling out of bed in the morning

27% vs 23%

Women ♀



27%

don't share a morning kiss until they've brushed their teeth

26% vs 28%

Men ♂



14%

hold off on the mushy stuff until later in the day

14% vs 15%

Men ♂



13%

kiss after they get out of bed, but before brushing

13% vs 13%

♀ Tied ♂



4%

confessed that they don't remember

5% vs 3%

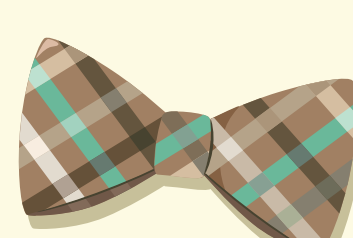
Women ♀

I LOOK Fabulous!



76% of women vs 65% of men consider themselves well groomed

Women ♀



Your DENTIST is Crying

Only

38% of women vs 32% of men floss every day

Women ♀

TEETH

Love the Ladies

6 in 10

people think women take better care of their teeth than men do.



73% vs 64%

of women of men brush their teeth twice a day

Women ♀

WHERE Are you?



The real world beats cyberspace for those seeking a relationship



40%

socialize at events

40% vs 41%

Men ♂

59%

meet people through friends

58% vs 61%

Men ♂



13%

meet people at church

11% vs 14%

Men ♂

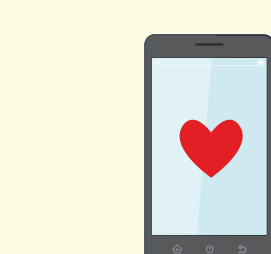


24%

are mingling on Facebook

18% vs 31%

Men ♂



39%

use online dating sites

29% vs 49%

Men ♂

21%

get social at school

23% vs 19%

Women ♀

27%

are meeting people at work

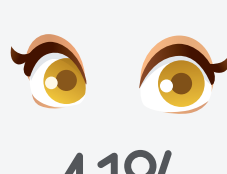
26% vs 28%

Men ♂



Here's LOOKING At you, kid

Preferred facial feature



41%

41% vs 41%

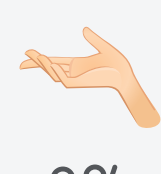
♀ Tied ♂



32%

35% vs 29%

Women ♀



8%

7% vs 9%

Men ♂



9%

6% vs 11%

Men ♂



<2%

1% vs 2%

Men ♂

76%

will alert a partner when something is stuck in their teeth

81% vs 71%

Women ♀



61%

will tell a partner when he/she has bad breath

68% vs 55%

Women ♀



30%

will warn a partner that it's time to go on a diet

35% vs 26%

Women ♀



Honey, HOW DO I LOOK?

34%

will point out that a partner is losing their hair

40% vs 27%

Women ♀



25%

will suggest their partners should whiten their teeth

29% vs 20%

Women ♀



25%

will encourage partners to get cosmetic dental work

30% vs 20%

Women ♀



9%

wouldn't feel comfortable sharing any of this information

9% vs 10%

Men ♂



We Have To TALK

The top dating deal-breakers for men and women

57%

Jealous stalker exes

59% vs 55%

Women ♀

46%

Unemployment

63% vs 26%

Women ♀

40%

Chronic bad breath

40% vs 40%

♀ Tied ♂

View the 2015 version in our press center.
<https://www.dentalplans.com/graphic>

*A national study was conducted for DentalPlans.com from Jan. 11 to Jan. 15, 2019 by Infosur Research. A total of 996 consumers were surveyed - an even mix of male and female - yielding data with an overall margin of error of +/- 3.11% and +/- 4.38% when broken out by gender.

DentalPlans.com
Join. Save. Smile.